

# NVENTURES NV

## NVentures Company Profile 2024

NVENTURES  
**NV**

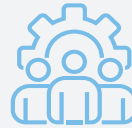
## Core Team

- Peter Elliott (Director)
- Ian Blakeley (Business Development)
- Mark Harris (Regional Director)
- Madeleine Slatford (Regional Director)
- Jonathan Craig (Hydrogen, New Energy)



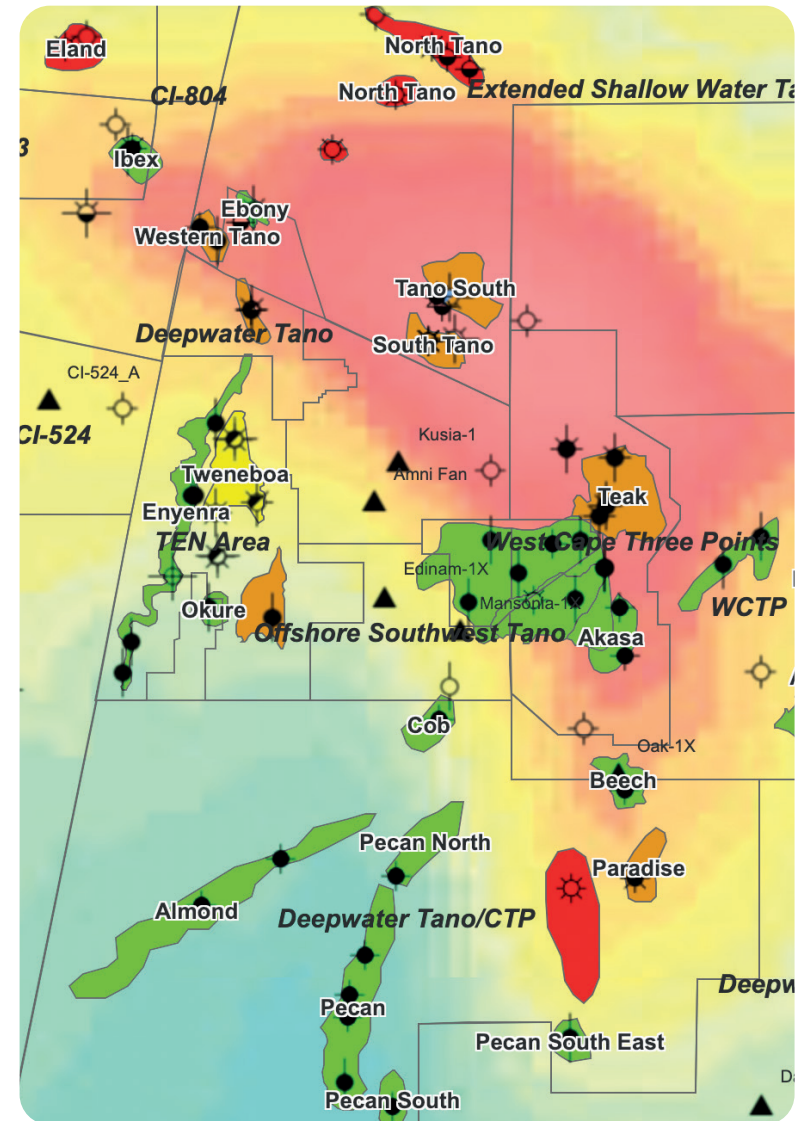
## Core Expertise

- Technical Geologists
- O&G Industry Background
- Experienced Scouting Personnel
- Extensive Scouting Network



## Locations

- London (Mayfair)
- Liverpool





# NVentures Ltd – Management Team



**Peter Elliott**  
Director



**Ian Blakeley**  
Business Development



**Mark Harris**  
Regional Director



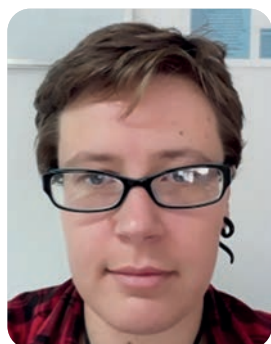
**Madeleine Slatford**  
Regional Director



**Jonathan Craig**  
Hydrogen, New Energy



**Jessica Elliott**  
GIS Manager



**Kelly Barker**  
Regional Analyst



**Sindhu Kovvuri**  
Regional Analyst



**Hattie Sandes**  
Regional Analyst



**James Andrew**  
Joint Ventures



# NVentures Ltd – Growing Product Suite



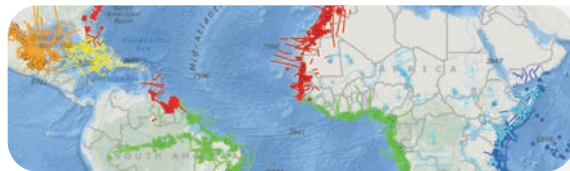
Oil & Gas Business Intelligence



Hydrogen & New Energy



Carbon Capture & Storage (CCS)



Earthmoves Geological Databases



Exploration Performance Maps



Country Data Packs

- Accurate, current, timely E&P intelligence for six continental regions
- No breakdown into smaller sub-regions – cost saving, more value







- Monthly Activity Report
- Interim Alerts
- GIS Access
- BD Database
  - Africa
  - Asia-Pacific
  - Latin America & Caribbean
  - Mediterranean & Europe
  - Middle East & South Asia
  - North America & US Gulf of Mexico

## Well to Watch – Argerich-1

Operator	Equinor
Well	Argerich-1
Partners	YPF, Shell
Country	Argentina
Block	CAN-100
Basin	Colorado Basin
Water Depth	1,527m
Spud Date	Q1 2024
TD Date	H1 2024
TD	3,990m
TD Formation	Upper Cretaceous
Prospect	Argerich

### Geological Context

### Comments

Equinor has received permits to drill the CAN-100, Argerich-1 well between December 2023 and May 2024. The well is expected to TD at ~3,990m, with work being carried out in ~1,527m water depth and expected to last approximately 60 days.

Equinor received initial approval to drill the well in December 2022, with work planned for 2023/2024.

The geology of the Colorado Basin is analogous to the Orange Basin in Namibia, where the Graff and Venus discoveries were made in 2022.

### Latest Press Updates

01/06/22: [EIA](#)

### Cost, Risk and Hydrocarbons

Cost -  
Chance of Success -  
Est. Hydrocarbons -

### Location Map

[www.NVentures.co.uk](http://www.NVentures.co.uk)

© NVentures Ltd 2024 Latin America, January 2024

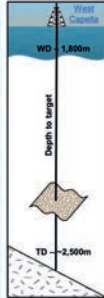
Page 126



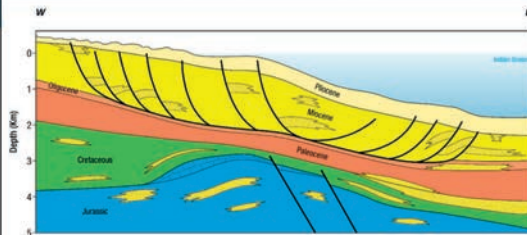
## Well Report – Raia-1



<b>Operator</b>	Eni 49.50%
<b>Well</b>	Raia-1
<b>Partners</b>	Qatar Energy 25.5%, Sasol 10%, ENH 15%
<b>Country</b>	Mozambique
<b>Block</b>	A5-A
<b>Basin</b>	Angoche Basin
<b>Water Depth</b>	1,800m
<b>Spud Date</b>	April 2023
<b>TD Date</b>	June 2023
<b>TD</b>	~2,500m
<b>TD Formation</b>	Upper Cretaceous
<b>Prospect</b>	Raia
<b>Status</b>	P&A Tight Hole



### Geological Context



### Location Map



### Comments

The West Capella drillship has ceased drilling the Raia-1 well on the A5-A license, and an official announcement is yet to be made by Eni. This was the first well to be drilled in the Angoche basin so is a high impact well. (Eni had hoped to drill this well in 2020 but the schedule was affected by COVID-19 restrictions).

This licence is located in the Angoche basin, close to both the onshore Angoche oil seep, that lies within the narrow sedimentary strip adjacent to outcropping basement. The licence and well Raia-1 are in the shallower waters of the Angoche basin at the upip end of a series of up-to-the-coast pinch-outs. The nearest drilling is within the adjacent Zambezi basin to the southwest, although DSDP 242 is located some 200km to the east across the Davi Ridge/Fraser Zone plate boundary. The operator, Eni has also drilled a series of shallow boreholes on and adjacent to the block.

### Latest Press Updates

-

### Hydrocarbons

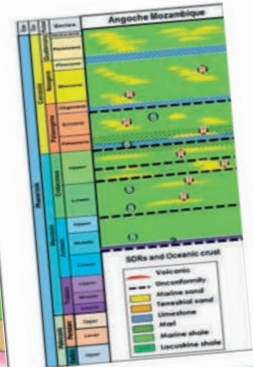
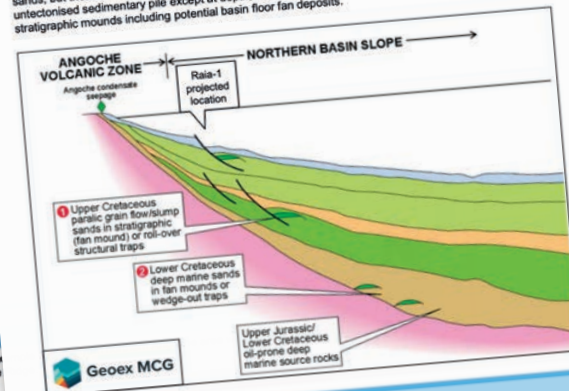
Tests –  
Shows –

## Well Report – Raia-1



### Comments continued

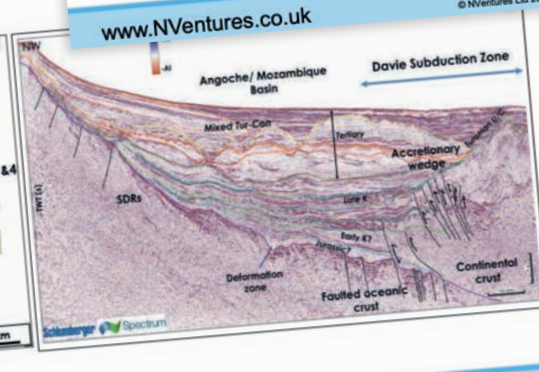
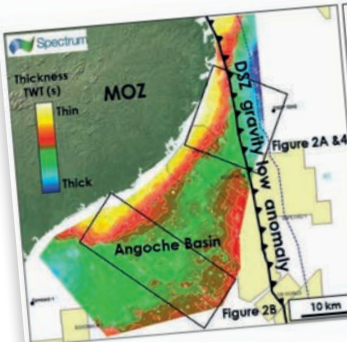
The presence of the oil seep and interpreted potentially mature Upper Jurassic to Lower Cretaceous marine shales gives this basin a decreased source/maturity risk despite its undrilled status. However, unlike the adjacent Zambezi and Rovuma Basins, it does not have a major river systems to supply mature reservoir sands, but the sedimentary section is thick (3-4 seconds of sediment) and, while this is relatively untectonised sedimentary pile except at depth, there are some fault bounded features and numerous stratigraphic mounds including potential basin floor fan deposits.



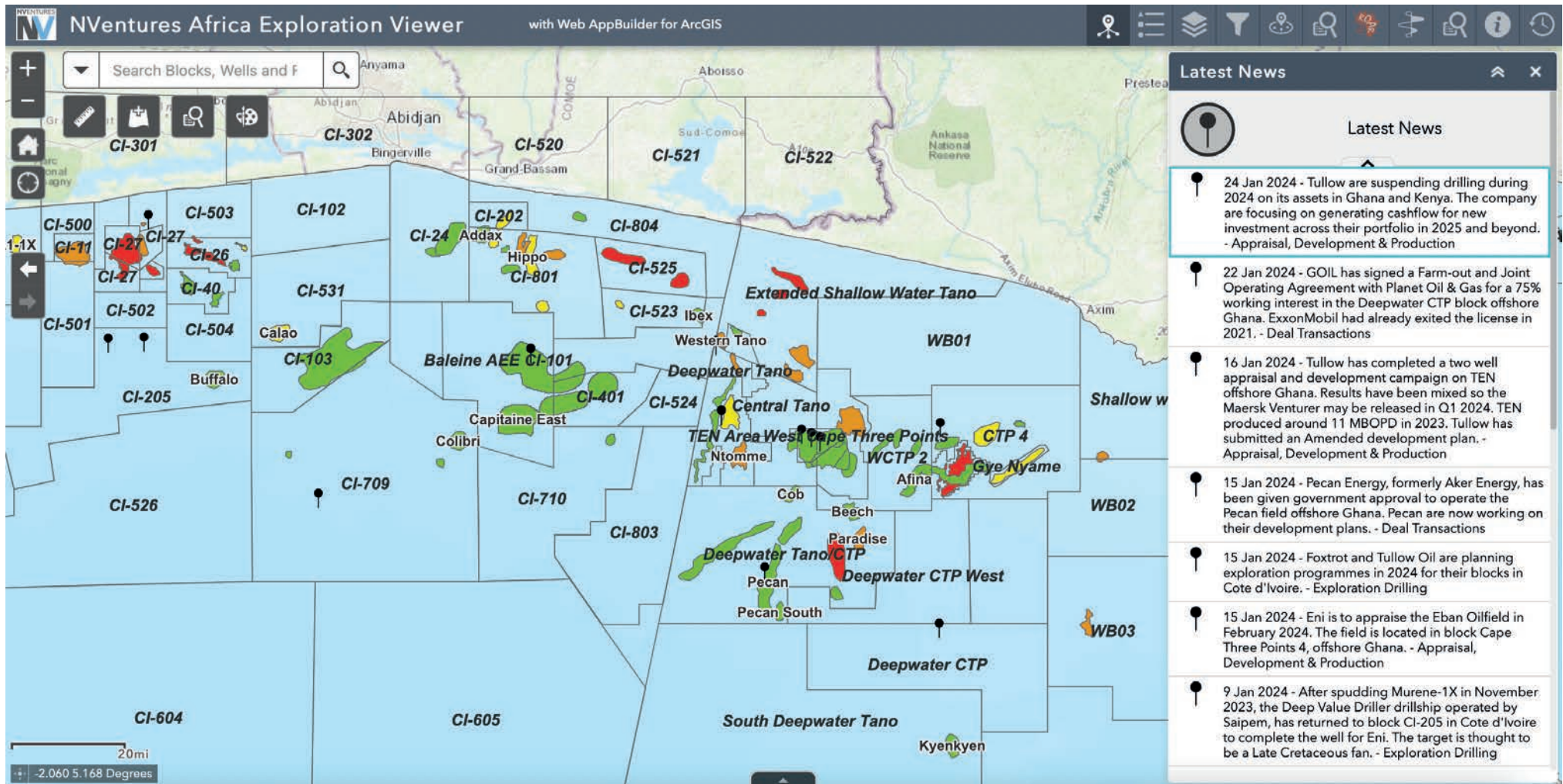
## Well Report – Raia-1

### Comments

Spectrum presentation of sediment thickness in Angoche Basin plus ex pathways from basin depocentre towards coast and towards the Davi



# Oil & Gas Business Intelligence – GIS Layers





# Oil & Gas Business Intelligence – BD Opportunities

**NVentures Africa Exploration Viewer** with Web AppBuilder for ArcGIS

Search Blocks, Wells and F

**Filters - displays only selected...**

- Africa Blocks by Country, Operator and/or Partner
- All Africa Discovery Wells
- Africa Last 5 Years Discovery Wells
- Africa Drilled Resource Opportunities
- Africa Wells with JV Seismic
- Africa ADRs - Exploration
- Africa ADRs - Development
- Africa ADRs - Production
- Africa Blocks with Deal Montages

**WCTP2 Discovered Assets**

In excess of 1.3 billion barrels of oil have been discovered to date in WCTP2, in sandstones deposited in several stratigraphic intervals.

Field	STOOIP	RF %	API	Age
Alina	686	35	31	Cenomanian
Banda	62	30	40	Alban
Beech (WCTP-2 Share)	122	35	30	Turonian
Odum West	235	30	19	U Campanian
Odum East	102	30	19	Maastrichtian
Tama (liquid)	109	35	46	Turonian
<b>Total</b>	<b>1,349</b>			
Tama (Gas)	670 bcf	80	gas	Turonian

SPRINGFIELD E&P  
Confidential to MNEA members

**WCTP 2**

Name: WCTP 2  
 Operator: Springfield E&P  
 Operator Abbreviation: Springfield  
 Operator Type: Independent  
 Operator %: 84%  
 Partners: GNPC 16%  
 Country: Ghana  
 Basin: Cote d'Ivoire/Tano Basin  
 Terrain: Offshore  
 Water Depth: 1,000  
 Max M:  
 Area sq km: 662.12  
 License Type: Concession  
 License: Exploration

Zoom to

20mi  
-4.488 4.590 Degrees

# Oil & Gas Business Intelligence – Data Tables



## Opportunities, Active Data Rooms



Operator	Block	Country	Basin	Terrain	Water depth (m)	Licence	Phase	Commitment	Award yr	Next Expiry Year	Partners	Area sq. km	Link	Comments	FTG	2D	3D	Wells	Drill ready (1 to 5)	Deal type	Agent
Oryx (85%)	AGC Shallow	AGC	MSGBC	Offshore	50	PSC	Ext	1 well	2011	2017	Enterprise AGC	1,700	<a href="#">url</a>	Oryx also hold AGC Central adjacent. Dome Flore 1bbo heavy oilfield on block, Cret oils in Oligocene carbonate res		2000s	2012	1970s		Well Farm in	Oryx
Cobalt Int	Blocks 20 and 21	Angola	Kwanza Basin	Offshore	2000	PSC	Phase 3	Appraisal	2011	2037	Sonangol P&P	10000	<a href="#">url</a>	Pre-salt Kwanza Basin with Lontra, Mavinga and Cameia developments. Sonangol reneged on \$1.75bn purchase		2000s	2012	2016		Dev farm in	Cobalt
Vaalco (40%)	Block 5	Angola	L Congo Shallow	Offshore	400	PSC	SEP	1 well	2006	2017	Sonangol P&P	5,708	<a href="#">url</a>	Proven oil on the block, 60km NE of Lontra. Pre and post salt targets. Large 3D prospect portfolio		1990s	2000	2015		Well farm in	Stellar
Elephant Oil (100%)	Block B	Benin	Benin / Dahomey	Onshore	0	PSC	Phase 1	250 2D	2013	2016	-	4,590	<a href="#">url</a>	Frontier block adjacent to successful Benin basin offshore. Vintage 2D and FTG indicate structural U Cret play	2014	1988			2D Farm in	NVentures	
Tower Resources (100%)	Thail	Cameroon	Rio del Rey Basin	Offshore	48	PSC	Phase 1	1 well and 3D	2015	2018	-	119	<a href="#">url</a>	Small low risk appraisal block with 3 wells and one discovery at Njorji. Deeper exploration potential.		2000s	1990s	2008		3D farm in	Tower
ERHC (100%)	BDS 2008	Chad	Doba Basin	Onshore	0	PSC	Phase 1	2D	2014	2017	-	41,800	<a href="#">url</a>	Prospective block with targets north of Maku in Doseo Basin and east of Benoy field in Doba Basin	2014				2D Farm in	ERHC	
Oranto Petroleum (90%)	CI-205	Cote d'Ivoire	Ivorian basin	Offshore	3144	PSC	Phase 3	1 well	2001	2016	Petroci	1,947	<a href="#">url</a>	Ex JV partner Lukoil drilled Buffalo 1, tight Alban oil and water wet good quality Turonian. Paon type lead on block		2000s	2009	2011		Well Farm in	Simco
Oranto Petroleum (90%)	CI-206	Cote d'Ivoire	Ivorian basin	Offshore	2900	PSC	Phase 3	1 well	2001	2016	Petroci	1,768	<a href="#">url</a>	Deepwater U Cret marine turbidite and channel systems with 3D and AVO support		1998	2003			Well Farm in	Simco
Taleveras (90%)	CI-501	Cote d'Ivoire	Ivorian basin	Offshore	1000	PSC	Phase 2	1 well	2012	2016	Petroci	521	-	U Cret play in slope and basin setting south of Lion and SE of Foxtot. Recent 3D and studies.	2000s	2014			Well Farm in	Taleveras	
Enerquif (90%)	Lotshi	Democratic Republic of Congo	Lower Congo Basin	Onshore	0	PSC	Phase 1	Seismic	2008	2013	Cohydro	507	<a href="#">url</a>	Contiguous with Cabinda and on trend with Mboundi. Aptian salt basin onshore acreage		2010			3D farm in	Enerquif	
Eni (55%)	Ndunda	DRC	Lower Congo Basin	Onshore	0	PSC	Phase 2	1 well	2006	2013	Cohydro, Surestream	1,119	-	Unclear if Eni and Surestream still partner on this block. Coastal Aptian salt basin					2D Farm in	Eni	
DIG Oil (100%)	Blks 8, 23, 24	DRC	Cuvette Basin	Onshore	0	PSC	Phase 1	2D	2007	2011	-	30,000	-	Large frontier blocks with vintage 2000km 2D over basin and 4 wells. Paleozoic and Mesozoic plays		1970s		1970s		2D farm in	Kivel
Atlas (100%)	Block H	Equatorial Guinea	Douala Basin	Offshore	1847	PSC	2nd Ext	1 well	2000	2018	-	991	<a href="#">url</a>	Aleta is a drill ready prospect, stacked U Cret turbidites with 3D and AVO		1990s	2003	2004		Well Farm in	Simco
Atlas (100%)	Block J	Equatorial Guinea	Niger Delta	Offshore	1400	PSC	2nd Ext	1 well	2000	2016	-	1,300	<a href="#">url</a>	Exploration block adjacent to Block R, Fortuna gas field. Amplitude supported gas prospects		2002	2008			Well Farm in	Simco
Open	AB2 to AB9, B1, 2,5,6,7,10,14	Ethiopia	Abay Basin	Onshore	0	PSC	Open	Exploration	2016	2020	-	5,000	<a href="#">url</a>	Mepex advertising open block opportunities in Ethiopia. Mandate unclear, limited data. Spectrum have 2D		1980s				Direct neg/n	Hydrocarbon Assets
New Age	Blocks 8, El Kuran	Ethiopia	Ogaden Basin	Onshore	0	Gas dev	Dev't	Develop El Kuran	2009	2017	-	5,000	-	New Age planning to develop El Kuran, 821 bcfg and 17 mmbbo.		2010		2014		App farm in	New Age
SouthWest Energy (100%)	Gambella	Ethiopia	Gambella Basin	Onshore	0	PSC	Phase 2	2D	2012	2016	-	17,000	<a href="#">url</a>	156 structures and 48 leads identified on modern FTG. New 2D and full study required.	2014				2D Farm in	Southwest Energy	
SouthWest Energy (100%)	Blks 9A, 9, 13	Ethiopia	Jijiga Basin	Onshore	0	PSC	Phase 2	1-3 wells	2012	2016	-	29,000	<a href="#">url</a>	East of Calub gas field, large frontier blocks with seeps and multiple play systems. FTG and geochem support		2012	2011			Well Farm in	Southwest Energy
New Age (100%)	Adigala	Ethiopia	Ogaden Basin	Onshore	0	PSC	Phase 2	1 well	2007	2017	-	10,300	<a href="#">url</a>	Large frontier block with seeps. Modern FTG and 2D, mature prospects		2012	2014			MSP	Simco
Pura Vida (100%)	Nkembe	Gabon	N Gabon	Offshore	500	PSC	Phase 2	550 3D, 1 well	2012	2017	-	1,210	<a href="#">url</a>	Exploration, shallow water, with proven Loba small discovery on block		1990s	2014	1976		Farm in	Hydrocarbon Assets
Impact Oil & Gas (100%)	D13, D14	Gabon	Lower Congo	Offshore	2,500	PSC	Phase 1	2500 sq km 3D	2014	2018	-	5,000	<a href="#">url</a>	Deepwater exploration blocks awarded in 10th R. Diaman and Leopard discoveries to the north, pre-salt gas cond.		2015				3D farm in	Impact
Marathon (100%)	Tchicuate (G13)	Gabon	South Gabon Basin	Offshore	2,000	PSC	Phase 1	1 well	2014	2018	GOC 15% option	1,120	<a href="#">url</a>	Full 3D PSDM supported pre salt targets downdp of Dussafu and Etame		1990s	2015			Well Farm in	Envoi
Vaalco (28.1%)	Etam Marin	Gabon	South Gabon Basin	Offshore	100	PSC	Dev't	E&P	1995	2025	Sasol, Addax, PetroEnergy	3,074	-	Large permit offshore S Gabon salt basin with production from Aptian Gamba and Dentale Fms.		1990s	2000s	2015		MSP	Vaalco
Harvest Nat Res (66.667%)	Dussafu	Gabon	South Gabon Basin	Offshore	400	PSC	Dev't	Development	2001	2017	Panoro	2,774	<a href="#">url</a>	Tortue, Ruche, Moubenga and Walt Whitman discoveries in L Cret Gamba (13m) and Dentale (38m)		2000s	1994	2012		Dev farm in	Harvest
Panoro Energy (33.333%)	Dussafu	Gabon	South Gabon Basin	Offshore	400	PSC	Dev't	Development	2001	2017	Harvest	2,774	<a href="#">url</a>	Development opportunity with discovered contingent reserves and further exploration targets		2000s	1994	2012		Dev farm in	Panoro
African Petroleum (100%)	A1 and A4	Gambia	MSGBC	Offshore	2,000	PSC	Phase 2	1 well	2015	2018	-	2,672	<a href="#">url</a>	Exploration blocks including shelf edge and canyon play proven immediately north at SNE and FAN		2000s	2014			Well Farm in	APCL



# Hydrogen & New Energy – Activity Report


For more information, please contact:  
 T/ +44 (0)7860 930 923  
 E/ info@nventures.co.uk  
 WWW.NVENTURES.CO.UK

## NVentures Hydrogen and New Energy Report

NVentures New Energy report following Global Hydrogen Development

**A Global Monthly Activity Report With Full Online GIS Database:**

- Hydrogen Report covering global production, transmission, transport and technology activity across the sector
- Frequent interim updates
- GIS monthly updates
- PDF (including hyperlinks), spreadsheet and hard copy
- Company-wide subscription



### Selection of Latest Major Hydrogen Projects

Project	Country	Product	Operator	Partners	Output (ktpa)	Year Online	Current Status
Camacan (Phase 1)	Brazil	Green Hydrogen/Ammonia	Ungel		10	2023	Construction
Leuna Green Hydrogen	Germany	Green Hydrogen	Linde		0.73	2023	Construction
Lhyfe Bretagne	France	Green Hydrogen	Lhyfe	Brookfield Renewables	5.475	2023	Construction
Susquehanna H2 Plant	USA	Green Hydrogen	Plug Power	Shell, Enerkem, Sunco, Proman	11.1	2023	Construction
Varennes	Canada	Green Hydrogen & Oxygen	Hydro-Québec	Plug Power	1.6	2023	Construction
Danube Refinery Green Hydrogen	Hungary	Green Hydrogen	MOL	Multiple	0.031	2023	Pilot Study
Dauraes Green Hydrogen Village (Phase 1)	Namibia	Green Hydrogen/Ammonia	DGHC		0.4745	2023	Construction
Hellasylt Hydrogen HUB (HH4)	Norway	Green Hydrogen	Nonwegian Hydrogen AS	BOC, ITM Power	2.92	2023	Feasibility Study
Whitelee Solar+Hydrogen/EEGS	UK	Green Hydrogen	ScottishPower		3.842	2023	Pre-construction
Cavendish NextGen Hydrogen Hub	USA	Green Hydrogen	Florida Power & Light Company (FPL)	Plug Power & Olin Corporation JV	5.475	2023	Construction
St. Gabriel Hydrogen Plant	USA	Green Hydrogen	Hydrogeni		110	2024	Feasibility Study
H2Parth	Australia	Blue Hydrogen	Woodside		0.9125	2024	Pre-construction
Moreton Bay Hydrogen Hub	Australia	Emerald Hydrogen	Pure Hydrogen	CAC-H2	12.775	2024	Feasibility Study
Port of Antwerp-Bruges Green Hydrogen	Belgium	Green Hydrogen	Plug Power	Port of Antwerp-Bruges	10.95	2024	Feasibility Study
				Baker Hughes	20	2024	Pre-construction
				Scatec, OCI, TSFE, Orascom Construction	15	2024	Pre-construction
				Hatch Power, Flmpec, Sweco	2.92	2024	Pre-construction
					0.85	2024	Pre-construction
					21.9	2024	Pre-construction
					0.85	2024	Pre-construction
					3.08	2024	Pre-construction

Hydrogen and New Energy, February 2023 Page 40

### Production – Europe

**Denmark** - Technip Energies has been awarded a FEED contract by Arcadia eFuels for the world's first commercial eFuels facility for sustainable aviation fuels production in Vordingborg.

**France** - Lhyfe has obtained the construction permit for a green hydrogen production site in the Morbihan region of Brittany.

**Germany** - Sunfire has successfully commissioned its high temperature SOEC electrolyser at the Kopernikus P2X project.

**Germany** - VoltH2 and NPorts announced plans to construct a green hydrogen plant at Wilhelmshaven.

**Netherlands** - HyCC has contracted Kraftenlagen for the basic design and engineering (FEED) of the H2eron plant and placed an order with Nel for the supply of 40 MW of electrolysis stacks.

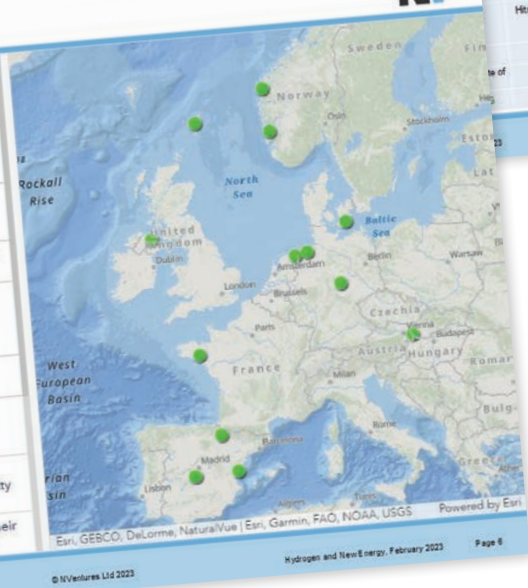
**Norway** - FFI has advanced its potential 300 MW Holmeneset Project to an early feasibility phase.

**Norway** - GenH2 has signed a strategic partnership agreement with HYDS for the production of green liquid hydrogen in Norway and the rest of the Nordic market.

**Slovakia** - Metacon received an order for a 1 MW electrolyser and hydrogen refuelling station with a capacity of 400 kgpd from an undisclosed customer.

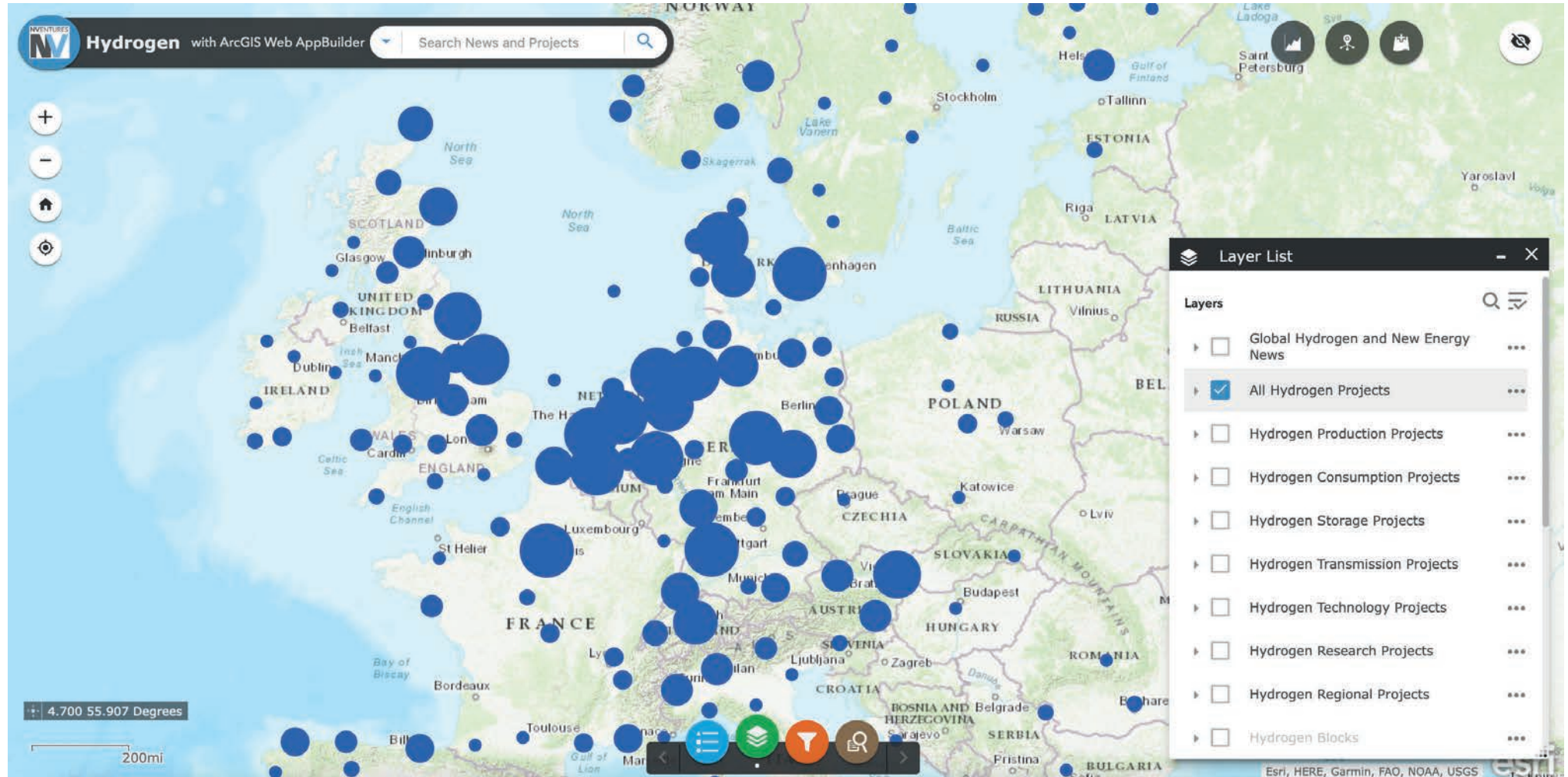
**Spain** - ACCIONA Energia and Plug Power announced their 25 MW Valle H2V Navarra joint green hydrogen project.

[www.NVentures.co.uk](http://www.NVentures.co.uk)



# Hydrogen & New Energy – Hydrogen Projects

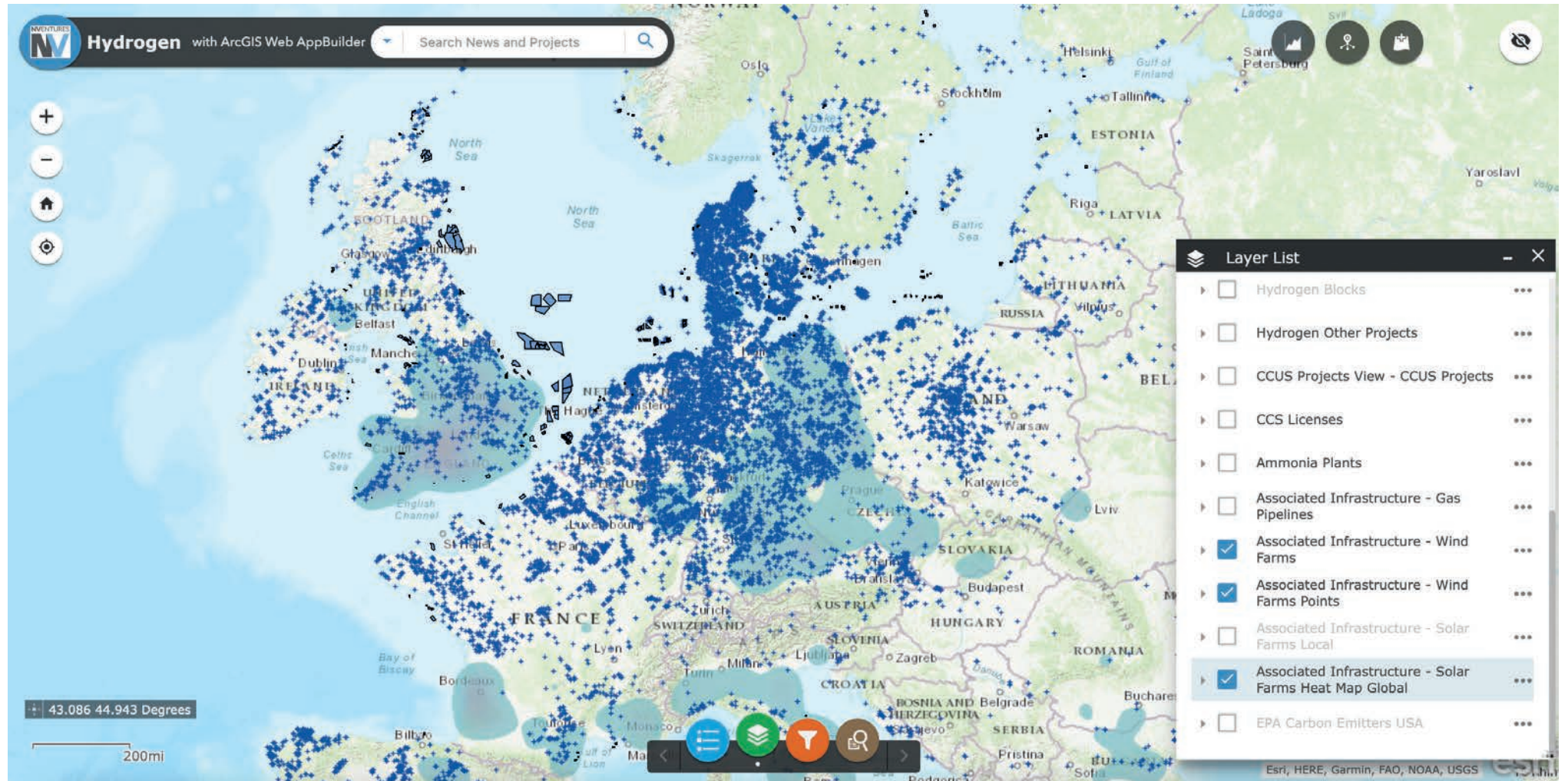
## Europe





# Hydrogen & New Energy – Renewables

## Europe



# Carbon Capture & Storage (CCS) – Bid Rounds / Awards

## 1st Carbon Storage License Round 2022



<b>Country</b>	United Kingdom
<b># Licenses</b>	21 Offshore Storage Licenses
<b>Pre-Qualification Date</b>	13th September 2022
<b>Deadline</b>	13th May 2023
<b>Award Schedule</b>	15th September 2023
<b>Licensing Authority</b>	<a href="#">NSTA</a>
<b>Agent</b>	-

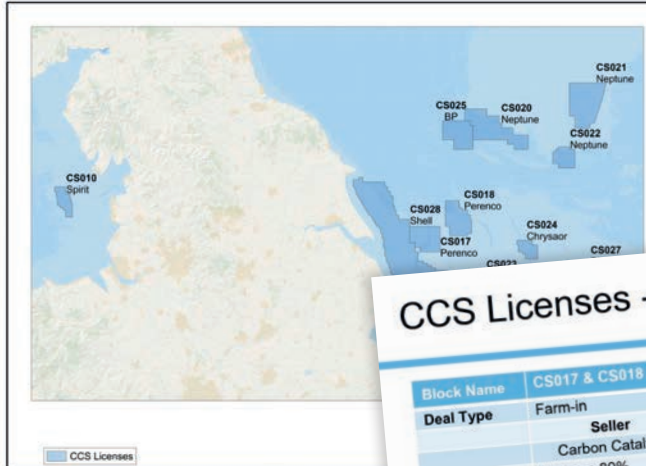
### Comments

The [list of awarded companies](#) for the 1st Carbon Storage License Round was announced on 15th September 2023. Fourteen companies have been awarded 21 licenses in depleted oil and gas reservoirs and saline aquifers covering around 12,000 sq km - including sites near Aberdeen, Teesside, Liverpool, and Lincolnshire.

The locations could store up to 30 million tonnes of CO per year by 2030, approximately 10% of UK annual emissions which were 341.5 million tonnes in 2021.

Shell, Perenco and Eni have all been awarded licenses off the coast of Norfolk in sites which could form part of the Bacton Energy Hub – a carbon storage, hydrogen and offshore wind project.

The licenses offered include a variety of geological storage structures, and the criteria used to select them also included proximity to existing infrastructure and industrial clusters.



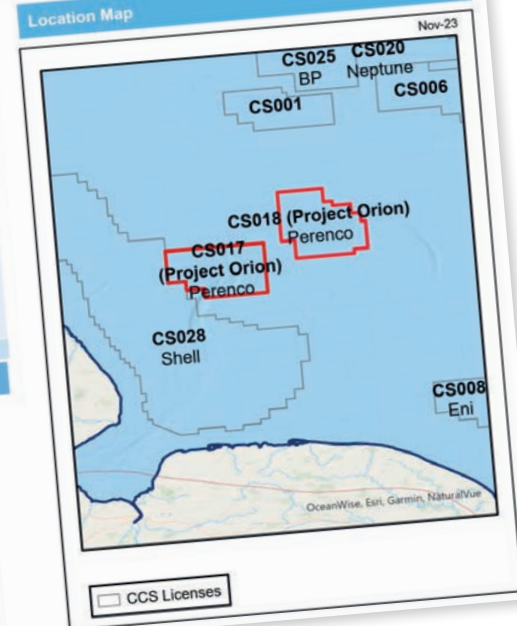
<b>Available Documents</b>	
<a href="#">Guidance for application</a>	<a href="#">Provisional Award M...</a>
<a href="#">Technical Report</a>	<a href="#">Provisional Award M...</a>

## CCS Licenses - CS017 & CS018 (Project Orion), SEEL

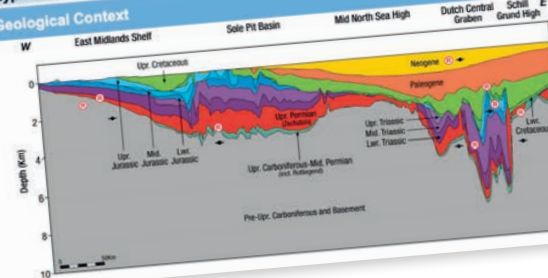


<b>Block Name</b>	CS017 & CS018 (Project Orion)		
<b>Deal Type</b>	Farm-in		
	<b>Seller</b>	<b>Entrant</b>	<b>% Exchanged</b>
	Carbon Catalyst	SEEL	10%
<b>Operator</b>	Perenco 80%		
<b>Partners</b>	Carbon Catalyst 10%, Summit Energy 10%		
<b>Deal Date</b>	17 November 2023		
<b>Block Expiry</b>	-		
<b>Country</b>	UK		
<b>Deal Value</b>	-		
<b>Comments</b>	Summit Energy has completed a Farm-In Agreement with Carbon Catalyst to acquire a 10% interest in Carbon Storage Licenses CS017 and CS018. The project is planned to be operational by 2031, with CO2 injection of up to over 6 Mtpa to provide a cost-effective CO2 sequestration option for industry in the greater Humber area.		
<b>Hyperlink</b>	<a href="#">Press Release</a>		

### Location Map



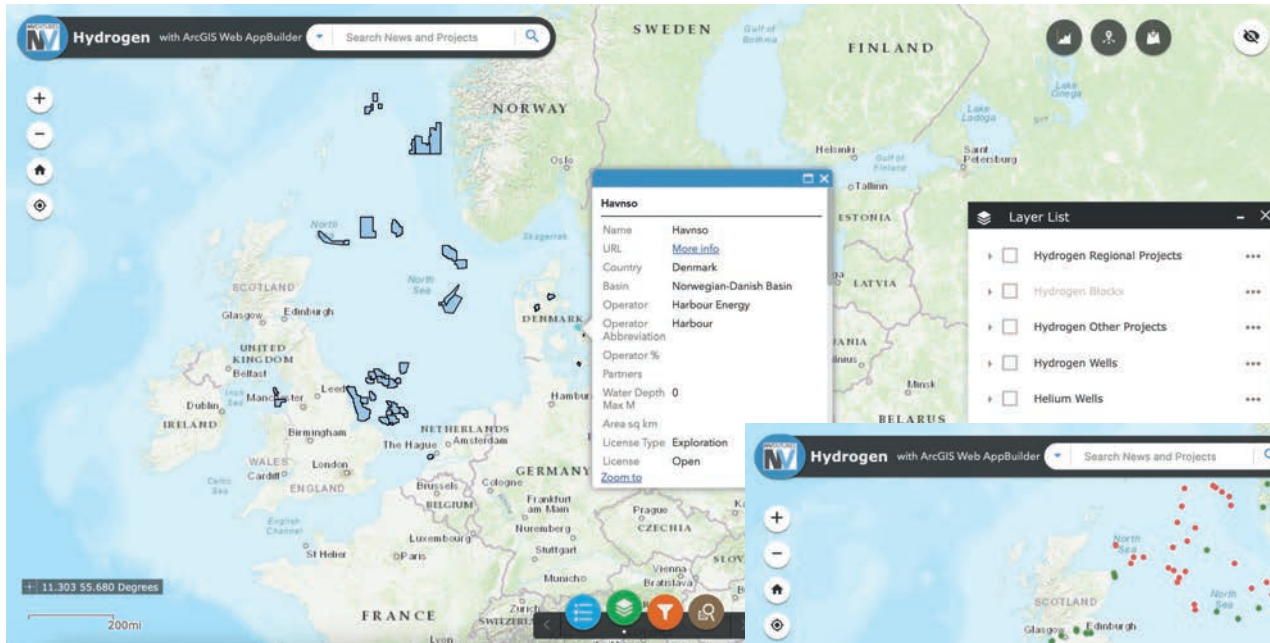
### Geological Context



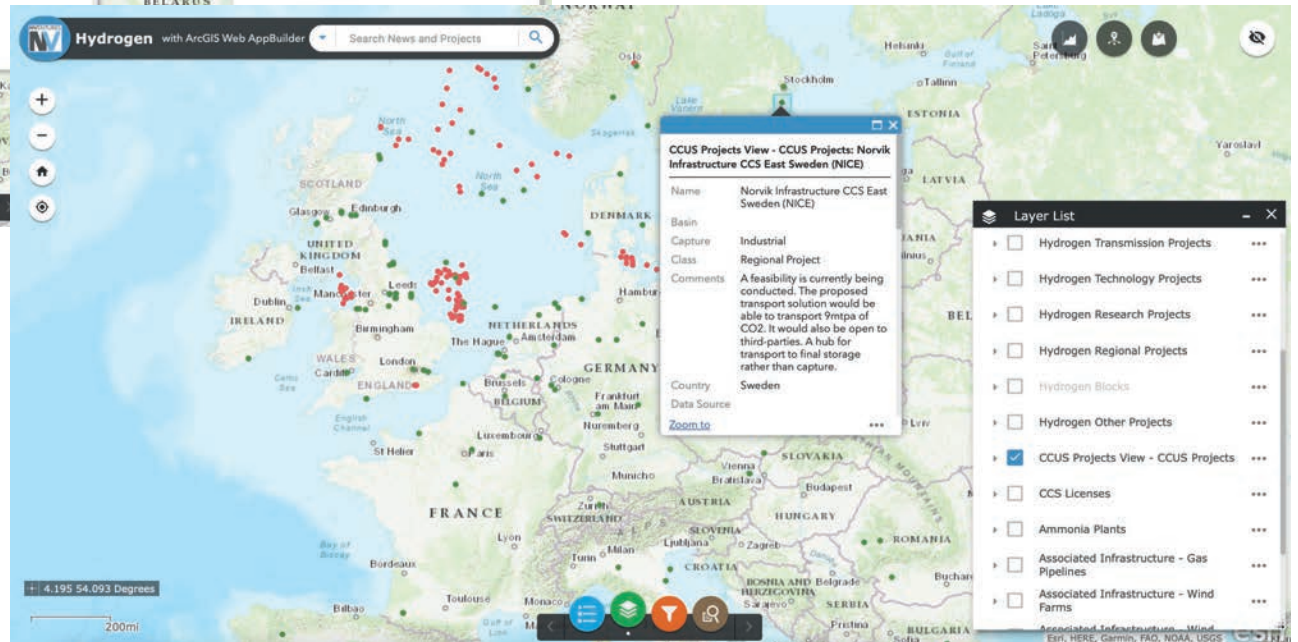


# Carbon Capture & Storage (CCS) – Licenses / Projects

## Licenses



## Projects

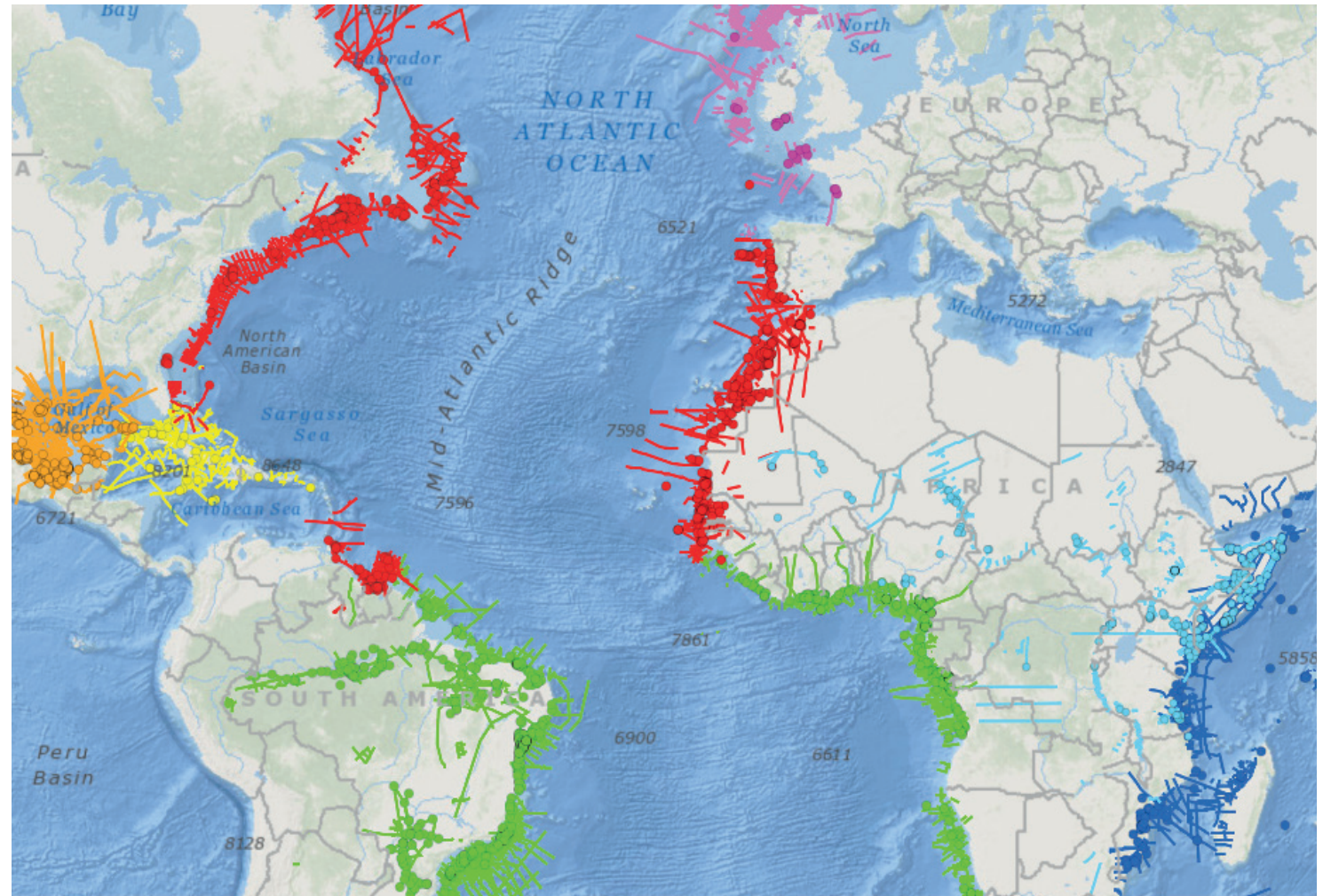


# Earthmoves – Geological Databases

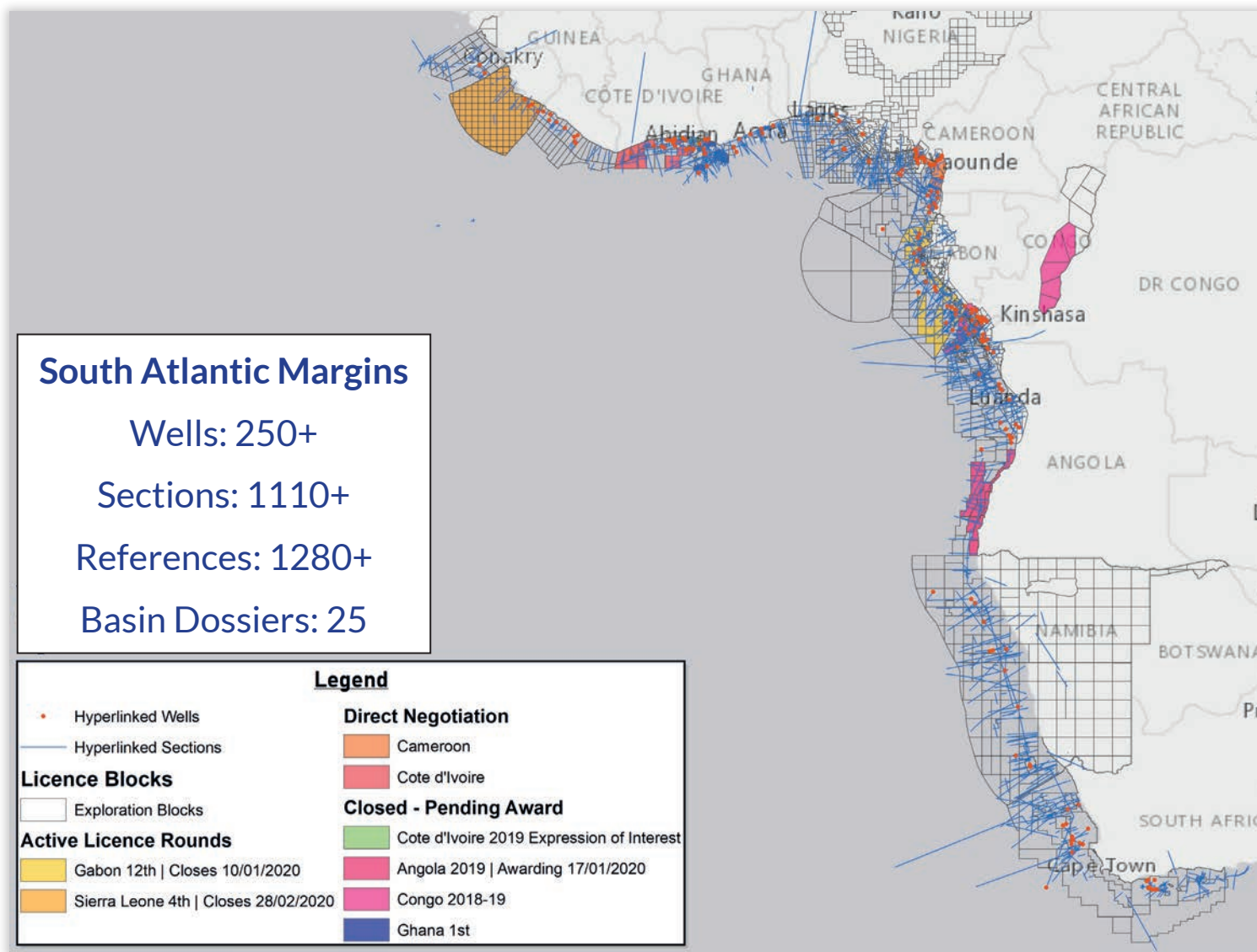


Premier source of geotechnical data/reports for global basin, asset and bid round analysis (Ian Davison)

- South Atlantic Margins
- Central Atlantic Margins
- Africa Interior Rifts
- East Africa Margin
- Gulf of Mexico
- Northern Caribbean
- North Atlantic Margins
- East India & Myanmar







# Earthmoves – Major Update Underway / New Region



For more information, please contact:  
 T/ +44 (0)7860 930 923  
 E/ ian.blakeley@nventures.co.uk

## NVentures Earthmoves

### 2023 Update

NVentures are pleased to announce a major update to the popular Earthmoves Database. Earthmoves brings together seismic, wells, geology and GIS to provide exploration and energy companies with comprehensive geotechnical coverage. The latest Earthmoves update now benefits from full integration with daily NVentures scouting updates. The new senior editing team is also integrating valuable data for CCS and new energy industries such as hydrogen.

- 2023 Update – play fairways, geology, publications, wells and seismic information and bibliography updates
- World class geotechnical team – Senior associates from NVentures, PVE Consulting, Beagle Geoscience and Canopy E&P Services
- Fully integrated with the NVentures scouting service
- Integration into an Online Platform (ArcGIS Online)
- Annual updates subscription available
- New Earthmoves Region planned – Eastern Mediterranean and North Africa
- CCS and New Energy databases – Global salt GIS layers, hydrogen and CCS activity

Follow @NVenturesLtd



## New Earthmoves Region

### Pre-Commitment Opportunity

NVentures are seeking pre-commitment for an Earthmoves product covering the active Mediterranean basins and adjacent onshore North Africa.

#### Content

ArcGIS project including:

- Geology / potential field layers
- Seismic and cross sections
- Well locations and key well summaries

#### Basin dossiers:

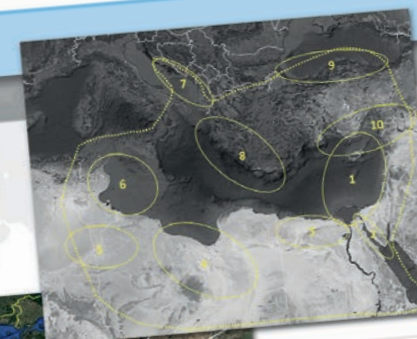
- Structure and stratigraphy
- Reservoirs and source
- Play fairways
- Key fields and discoveries
- E&P activity
- Bid rounds

#### Integration with NVentures from project initiation:

- Pre-commit UK £50,000
- Post-commit UK £75,000

Follow @NVenturesLtd

For more information, please contact:  
 T/ +44 (0)7860 930 923  
 E/ ian.blakeley@nventures.co.uk

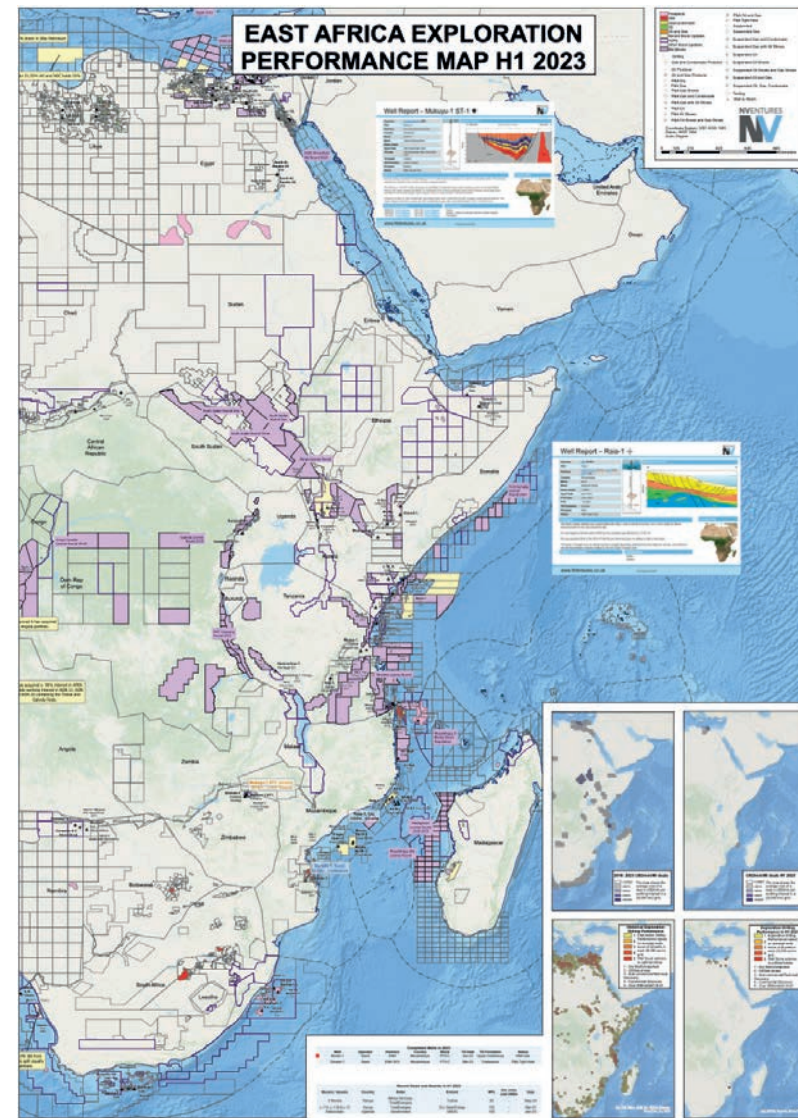
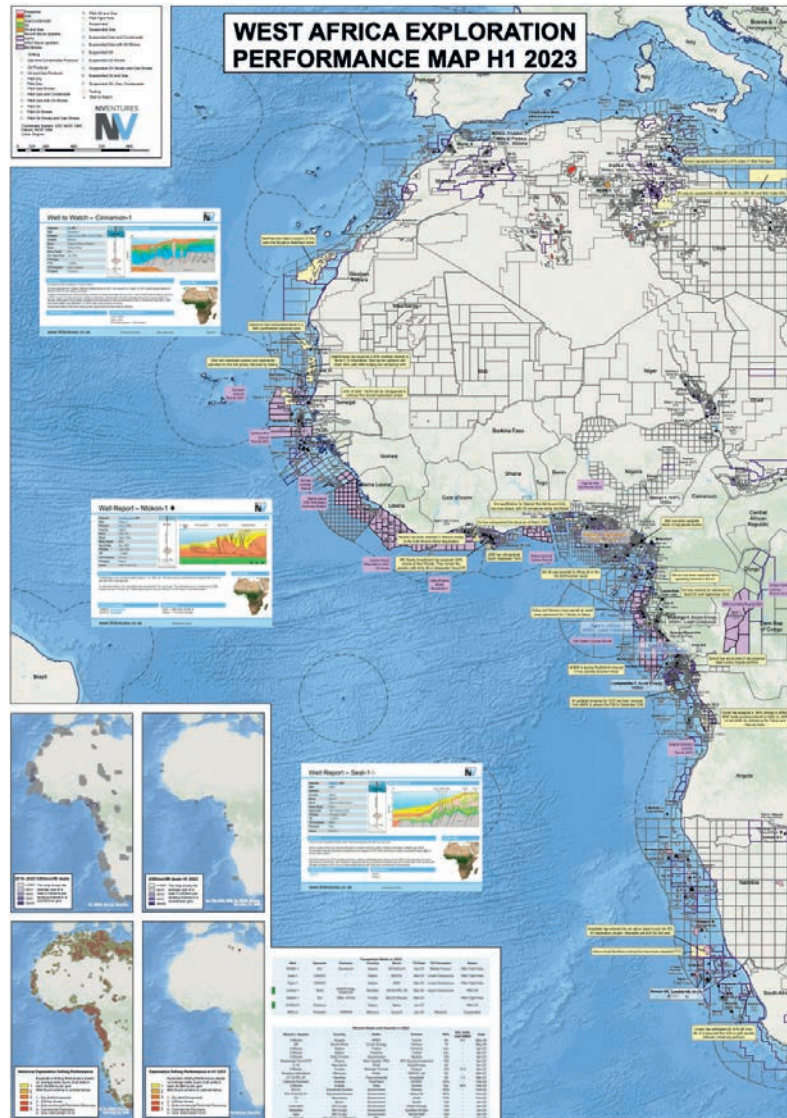


- Basin dossier areas:
1. Nile Delta & Nile Cone / Levant Basin
  2. Gulf of Suez
  3. Western Desert
  4. Sirte Basin
  5. Ghadamis Basin
  6. Pelagian Basin
  7. South Adriatic Basin
  8. Eastern Ionian Sea (Albania & Western Greece / Crete)
  9. Southern Black Sea
  10. SE Turkey

WWW.NVENTURES.CO.UK



# Exploration Performance Maps



# Country Data Packs – Africa

**NVENTURES**  
**NV**

For more information, please contact:  
T/ +44 (0)7860 930 923  
E/ [ian.blakeley@nventures.co.uk](mailto:ian.blakeley@nventures.co.uk)  
[WWW.NVENTURES.CO.UK](http://WWW.NVENTURES.CO.UK)

## Cote D'Ivoire and Ghana Country Packs

Detailed E&P Reports Including Lithostrat Geological Well Summaries

**Comprehensive well data for Cote D'Ivoire and Ghana includes:**

- Summary lithostrat and tops log for 56 wells in Cote D'Ivoire
- Summary lithostrat and tops log for 112 wells in Ghana
- E&P scouting history covering exploration wells, block summaries and field montages
- Dedicated content from JV partners

• GIS and Spreadsheet deliverables  
• Drilling campaign prognoses including target, timing and location

**COTE D'IVOIRE** **GHANA**

**NVENTURES**  
**NV**

Cote D'Ivoire and Ghana Country Packs  
Detailed E&P Reports Including Lithostrat

[WWW.NVENTURES.CO.UK](http://WWW.NVENTURES.CO.UK)

Follow @NventuresLtd

TGS | Searcher | Schlumberger | ION | AIRBUS | ZEPHARUS | GreenMap Inc. | BellGeospace

**NVENTURES**  
**NV**

For more information, please contact:  
T/ +44 (0)7860 930 923  
E/ [ian.blakeley@nventures.co.uk](mailto:ian.blakeley@nventures.co.uk)

## Namibia Country Pack

Database and Montages : Exploration reporting with essential geological context

**Comprehensive Country Packs include:**

- Exploration well reports
- Block summary reports
- Field montages
- GIS Atlas (Blocks, wells, fields, deals)
- Spreadsheet and shapefiles deliverable

**Namibia – Exploration and BD Update Pack**

**Detailed Country Reports:**

- Geological context and stratigraphic column
- Drilling campaign prognoses including target, timing and location
- Dedicated content from JV partners

**NVENTURES**  
**NV**

Namibia Country Pack  
Database and Montages : Exploration reporting with essential geological context

[WWW.NVENTURES.CO.UK](http://WWW.NVENTURES.CO.UK)

Follow @NventuresLtd

TGS | Searcher | Schlumberger | ION | AIRBUS | ZEPHARUS | GreenMap Inc. | BellGeospace



NVENTURES  
**NV**

## NVentures Ltd – Contacts



**LONDON**

**Peter ELLIOTT**

Director

Mobile : +44 (0)7971 073 198

[peter.elliott@nventures.co.uk](mailto:peter.elliott@nventures.co.uk)



**LONDON**

**Ian BLAKELEY**

Business Development

Mobile : +44 (0)7860 930923

[ian.blakeley@nventures.co.uk](mailto:ian.blakeley@nventures.co.uk)



[WWW.NVENTURES.CO.UK](http://WWW.NVENTURES.CO.UK)